

- Is it difficult to squeeze out of your car in your garage?
- Is it difficult and stressful trying to drive your car into your tight garage?
- Have you given up parking your car in the garage because it is just not worth the effort?



## MYPARKER is the solution for you

Embark and disembark from your car in comfort outside your garage and let MYPARKER platform park your car safely.



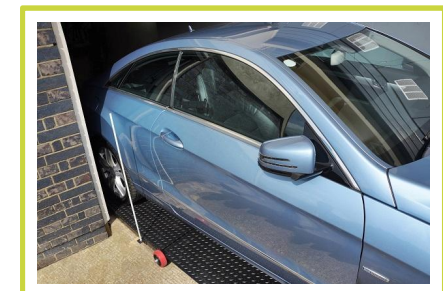
## Having difficulty squeezing out of your car in the garage?

Cars have become bigger over the years but garage sizes have remained the same, so most of us have given up parking in them. We forget the hidden costs of leaving our car outside. Insurance goes up, the vehicle faces the risk of vandalism, and exposure to the weather means more depreciation. Even if we manage to get our car into the garage it is next to impossible to open the door and get out, risking further damage to the car.



## So we offer you the easy solution

MYPARKER platform ensures your vehicle fits perfectly inside your garage, keeping it clean, secure, and unscratched. Simply press the remote button and the platform glides out of the garage. Drive onto the platform with no danger of damaging your car and disembark in comfort. When you are ready, simply let the platform reel in your vehicle into your garage with no risk of damage.



Call us today and take the stress out of parking your car in your garage.



**Freephone: 0800 772 3328**



# MYPARKER

HOME PARKING MADE EASY

Designed with you in mind

0800 772 3328

[www.myparker.co.uk](http://www.myparker.co.uk)

## CLASSIC CAR

If your car isn't just a car – but an investment – keeping your vehicle in pristine condition is the most important priority to you.

Leaving a classic car outside is just not an option.

## PRIDE & JOY

Are you a car enthusiast? Is your car a gift to yourself? Have you just purchased a shiny new and expensive car?

No risk of vandalism.



## MOBILITY

Do you have a long-term mobility issue, or maybe you're simply not as agile as you use to be?

Easy and convenient with no risk of injuring yourself.

## FAMILY

Park your car on the platform outside your garage where there is plenty of space, and let the MYPARKER platform do the rest.

It just doesn't get easier.

You've given up on parking in the garage with the kids and shopping on board.

## NEW BUILD

Park your car on the platform outside your garage where there is plenty of space, reduce the size of your garage to just fit your car. Use the freed up space elsewhere in your house.

Use your space more effectively.

## BATTERY POWER

No mains power in your Garage? The optional battery pack upgrade will power MYPARKER platform.

No Electricity – No problem.





# MYPARKER

HOME PARKING MADE EASY

Designed with you in mind

0800 772 3328

[www.myparker.co.uk](http://www.myparker.co.uk)

## Double Garage

Are you lucky enough to own a double garage? Do you have sufficient room to open your car doors?

If you are parking one car in a double garage due to access, then MYPARKER is your solution

## Multiple parking

Do you have a triple garage or large car studio?

Fit more cars in the same space and give yourself more access at the same time.



## Containers

Do you want to store your car safely away in a container but don't want to push your car in and out of the container?

Store your investment and enjoy driving it whenever you want hassle free.

## Platform/Turntable Combo

Do you want to drive forward into your driveway in the evening and in the morning drive forward out of your driveway onto a busy highway?

Due to position of your garage, sometimes the only way to put your classic car away is a combination of a Turntable and MYPARKER.

## EV Cars

Do you need an easy solution for charging your EV car and park your car in a tight garage?

You care for environment, you bought your EV car and you can't squeeze out of your car or get to the charge point! Solution is MYPARKER



## No Parking Stress

It's stressful to drive your expensive car into the garage with only a few millimetres to spare. Smallest mistake will result in a very expensive repair bill. By using MYPARKER you don't need to worry about any of this.

## Low Car Depreciation

Keeping your car in the garage maintains your car in top condition and this will affect the value of your car when it's time to visit your car dealer. By using MYPARKER retain more of your car value and save on frequency of visiting your carwash.

## No Risk of Vandalism

Your car can only get vandalised or stolen if it is out in plain sight. Avoid the hassle of repairing keyed paintwork or reporting your stolen car to the police by putting it away safely in your garage using MYPARKER platform.

## Avoid End of Contract Charges

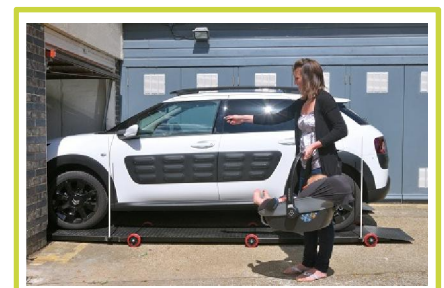
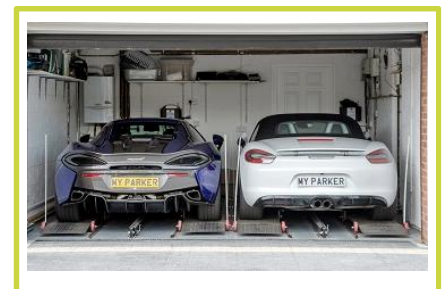
At the end of your PCP contract your finance provider expects a showroom condition car back from you. This can lead to significant charges being made to bring the car back to A1 condition ready for sale. Using MYPARKER to put your car away in the garage can keep your car in A1 condition and avoid PCP end of term charges.

## Free Up Space on Your Driveway

Multi car ownership households are now the norm and finding sufficient space on your driveway to park all your cars can be very difficult, whilst the garage sits empty. MYPARKER will park one of your cars in the garage safe and dry, releasing an additional space on your driveway.

## Reduce Your Car Insurance

Insurance companies expect you to store your classic car safely away. Using MYPARKER you can park your car in the garage and reduce your insurance cost.





## MYPARKER Price List

	Classic	Sumo
Weight Limit	2,000Kg	2,500Kg
Price	£3,250	£3,450
VAT	£650	£690
Price Inc.VAT	£3,900	£4,140
Battery Powered Upgrade	£450 + VAT	£450 + VAT

We carry out a FREE telephone survey to check the suitability of the platform for your garage.

## Monthly Payment Option

	Classic	Sumo
Price	£3,250	£3,450
Deposit	£500	£500
Finance Amount	£2,750	£2,950
<b>Net Monthly Payment (36 Months)</b>	<b>£89</b>	<b>£95</b>
VAT	£17.80	£19.09
Total Repayment	£3,203.64	£3,436.64

All figures shown are subject to credit checks and affordability and are subject to VAT at the relevant rates.

Moorgate Finance Ltd is Myparker Finance Broker

### Installation Cost

Installation takes a full day for our fitting engineer. You will also receive tutorial during the comprehensive handover. The installation engineer will arrive with the platform and clear the site ready for use.

South	£300 + VAT
Midlands	£400 + VAT
North	£500 + VAT